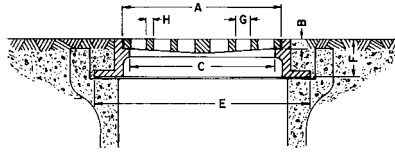


■ Note: When specifying/ordering grates, refer to "Choosing the Proper Inlet Grate" on pages 125-126.
 For a complete listing of FREE OPEN AREAS and WEIR PERIMETERS of all NEENAH grates, refer to pages 327-332.

R-2510 Series Pipe Bell Frame, Grate

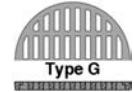
Light Duty

CATALOG NUMBER	GRATE TYPE	SQ. FT. OPEN	WEIR PERIMETER LINEAL FEET
R-2533	A	1.1	5.8
R-2533	C	1.0	5.8
R-2533	B	1.2	5.8



Illustrating R-2510 with Type C Grate

Bell and spigot vitrified clay and concrete pipe are made under many specifications and dimensions vary. Check the sizes in the table to be sure they will fit the pipe you are using.

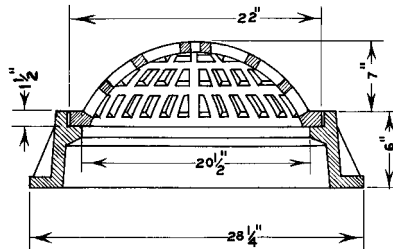


Dimensions in inches

Catalog No.	A	B	C	E	F	G	H	Pipe Size	Grate Type	Frame/Lid
R-2510	22	1 1/2	20 15/32	27 9/16	3 15/16	2 1/4	3/4	24	C	R-1690
R-2510-1	15 3/4	1 3/8	15	22	3	3/4	1	18	G	R-1910-D
R-2510-2	27 1/2	1	25 3/4	34 1/2	4	7/8	3/4	30	G	R-1773

R-2510-A Inlet Frame, Beehive Grate

CATALOG NUMBER	GRATE TYPE	SQ. FT. OPEN	WEIR PERIMETER LINEAL FEET
R-2510-A	Beehive	1.1	5.8



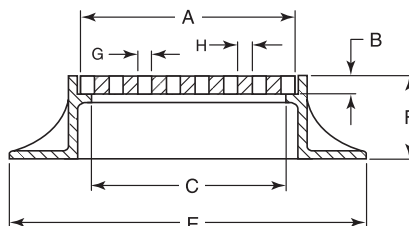
For additional beehive grates, see the R-2560 Series.

Available Lid: R-1761

R-2525 Series Inlet Frame, Grate

Light Duty

CATALOG NUMBER	GRATE TYPE	SQ. FT. OPEN	WEIR PERIMETER LINEAL FEET
R-2525-A	E	0.2	3.1
R-2525-C	G	0.4	4.1
R-2525-D	G	0.4	4.1
R-2525-E	E	0.6	4.7
R-2525-F	G	0.8	5.4
R-2525-G	G	0.8	5.1



Illustrating R-2525-A

Dimensions in inches

Catalog No.	A	B	C	E	F	G	H	Frame/Lid
R-2525-A	12	1	11	19	4	1	1	R-1791-A
R-2525-C	15 3/4	1 3/8	14 3/4	21	4 3/4	3/4	1	R-1910-C
R-2525-D	15 3/4	1 3/8	15	23	4 3/4	3/4	1	R-1910-B
R-2525-E	18	1	17	25	4 1/2	1 1/8	1 1/4	R-1791-E
R-2525-F	20 1/2	5/8	18	30	5	1	7/8	R-1791-F
R-2525-G	19 1/2	1 1/2	18	29	5 1/2	3/4	3/4	R-1791-G

Supplied By:

TRENCHDRAIN SUPPLY

877-903-7246

www.trenchdrainsupply.com